

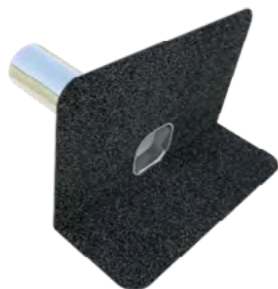
# RW115

## TREMDRAIN PARAPET OUTLET



Lasting Performance

### KEY BENEFITS SUMMARY



- Excellent flow rates
- Robust stainless steel construction
- Integrated membrane flange allows for flush detailing

### PRODUCT INFORMATION

#### Description

RW115 is a prefabricated, gravity fed, horizontal drainage outlet manufactured from stainless steel and includes an integral membrane flange.

#### Usage / Purpose

RW115 outlets are designed to effectively drain rainwater from Tremco flat roof systems and disperse through walls or parapets into external drainage goods.

#### Packaging

Units are boxed. Quantity and design subject to project.

#### Availability

Direct from Tremco CPG UK Limited (see bottom of leaflet for address and telephone details).

#### Application Instructions

RW115 consists of 2 components:

Stainless steel outlet spigot with pre-drilled fixing holes.

Factory laminated integral membrane flange.

Firstly locate the pre-drilled holes in the stainless steel base plate and secure with substrate specific screws into solid grounds. The integral membrane flange should be dressed into the proposed membrane system as per Tremco specification guidelines. Avoid prominent laps where possible.

#### Technical Service

Tremco CPG UK Limited has a team of experienced Technical Sales Representatives who provide assistance in the selection and specification of products. For more detailed information, service and advice, please call Customer Services on 01942 251400.

### Guarantee / Warranty

Tremco CPG UK Limited products are manufactured to rigid standards of quality. Any product which has been applied (a) in accordance with Tremco CPG UK Limited written instructions and (b) in any application recommended by Tremco CPG UK Limited, but which is proved to be defective, will be replaced free of charge.

Tremco CPG UK Limited reserves the right to alter product specifications without prior notice, in line with Company policy of continuous development and improvement.

### With 400mm spigot

Outlet size	Flow rate l/sec	To suit pipe size (mm) where outlet is inserted into existing pipe in refurbishment situations	Membrane attachment
50mm	0.32	50	500 x 500
75mm	0.63	75	500 x 500
100mm	1.06	110	500 x 500

### With 600mm spigot

Outlet size	Flow rate l/sec	To suit pipe size (mm) where outlet is inserted into existing pipe in refurbishment situations	Membrane attachment
50mm	0.32	50	500 x 500
75mm	0.63	75	500 x 500
110mm	1.06	110	500 x 500